



## William Porter Close

Chelmsford, CM1 6AN

**Guide Price £525,000**



EXTENDED and immaculately presented is this **FOUR DOUBLE BEDROOM** semi-detached property with an **EN-SUITE** to master, an **IMPRESSIVE 24' LOUNGE DINER**, cloakroom, **STYLISH KITCHEN** with fully integrated appliances, contemporary family bathroom with TV inset over bath, plus 5 Years NHBC warranty remaining! View Today!!



# William Porter Close, Chelmsford, CM1 6AN

---

## Ground Floor:-

### Entrance Hall:

Composite entrance door to front, doors to cloakroom, kitchen, lounge diner, stairs to first floor, radiator, wood effect flooring.

### Cloakroom/WC:

Obscure double glazed window to side, wall mounted hand wash basin, low level W/C, chrome towel radiator, part tiled walls, tiled flooring.

### Kitchen:

11'9" x 7' (3.58m x 2.13m)

Double glazed window to front, range of wall and base units, rolled edge work surfaces with stainless steel sink inset, integrated fridge freezer, oven, microwave, gas hob with glass splashback and extractor over, dishwasher, washing machine, boiler to cupboard, radiator, part tiled walls, tiled flooring.

### Lounge Diner:

24'7" x 16'6" (7.49m x 5.03m)

An impressive-sized room with two velux windows to rear inset the paart pitched roof, double glazed french doors to rear, cupboard, two radiators, wood effect flooring.

## First Floor:-

### Landing:

Double glazed window to side, doors to bedroom two, bedroom three, bedroom four, family bathroom, stairs to second floor.

### Bedroom Two:

13'8" x 9'2" (4.17m x 2.79m)

Double glazed window to rear, fitted wardrobes, radiator.

### Bedroom Three:

11'3" x 9'2" (3.43m x 2.79m)

Double glazed window to front, radiator.

### Bedroom Four:

9'9" x 7' (2.97m x 2.13m)

Double glazed window to rear, radiator.

### Family Bathroom:

Obscure double glazed window to side, panel bath with shower over and waterproof TV to wall, low level W/C, wall mounted hand wash basin, chrome towel radiator, part tiled walls, tiled flooring.

## Second Floor:-

### Landing:

Door to bedroom one.

### Bedroom One:

13'7" > 8'6" x 12'10" (4.14m > 2.59m x 3.91m)

Two velux windows, door to en-suite, eves storage, radiator.

### En-Suite:

Velux window, double walk in shower, wall mounted hand wash basin, low level W/C, chrome towel radiator, tiled walls and flooring.

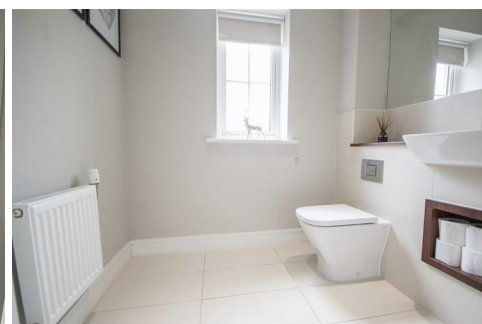
## Exterior:-

### Frontage & Parking:

Paved driveway to side for 2/3 cars, path to entrance door, mature shrubs to side.

### Rear Garden:

Paved patio to immediate rear, gated side access, shed to rear, rest laid to artificial lawn.



At Hamilton Piers we aim to ensure our particulars are accurate and reliable. However, they do not constitute any offer or contract, nor are they to be taken as statements or representations of fact. No tests have been carried out by us in respect of services, systems or appliances contained in the specification and no guarantee as to their operating ability or efficiency is given (unless stated otherwise).

All measurements are a guide only and, therefore, can be approximated in some cases. If purchasing, fixtures and fittings, apart from those mentioned in the particulars, are to be agreed with the seller. Some particulars, please note, may also be awaiting the seller's approval. If clarification or further information is required, please contact us.

AWARD WINNING SALES AND LETTINGS ACROSS ESSEX

01376 341 141 | 01245 269 777 | 01621 212 450 | 01371 809 500 | 0207 079 1510

